

## Waste Stream Clarification for General Waste (20.03.01 / 17.09.04)

# Waste Types and the Solutions

### Non-Hazardous Waste

	Wheelie Bin	Skip / RORO	F.E.L./  R.E.L.	Grab Lorry	Tipper	Caged vehicle	Bulk Bag
General (compactable)	✓	✓	✓	✓	✓	✓	✓
General (non-compactable)		✓		✓	✓	✓	✓
Inert (aggs, concrete, ceramics)		✓		✓	✓		
Soil		✓		✓	✓		
Wood		✓		✓	✓	✓	✓
Metal		✓		✓			
DMR (card, plastic, paper)	✓	✓	✓			✓	✓
Green (vegetation)	✓	✓	✓	✓	✓	✓	✓
Food	✓						

### Hazardous and Specialist Waste - MUST CHECK WITH SUPPLIER FIRST

	Wheelie Bin	Skip / RORO	Enclosed Skip / RORO	Container	Tube / Coffin	Drums	Bulk Bag	IBC	Caged Vehicle
Plasterboard	✓	✓	✓			✓	✓		✓
Asbestos	✓		✓			✓			✓
Fluorescent Tubes and Bulbs				✓	✓				
WEEE	✓	✓	✓	✓			✓		✓
Paint				✓				✓	✓
Clinical (Sanitary & Sharps)				✓					
Confidential	✓		✓	✓					
Other Haz (Oils, Chemicals, Batteries etc.)				✓		✓			

- Are waste requirements ordered from the office or is done on a site by site basis?
- How do you currently deal with your waste removal (skips, grabs, wheelie bins?)
- What is your estimated monthly spend on waste?
- How many offices, branches or depots do you have and what is your current setup for office waste?

Waste	YES	NO	Maximum recommended size	
			Skip	RORO
Asbestos		✗	16 yard <sup>3</sup>	40 yard <sup>3</sup>
Brick	✓		8 yard <sup>3*</sup>	20 yard <sup>3</sup>
Block	✓		8 yard <sup>3*</sup>	20 yard <sup>3</sup>
Cardboard / Paper	✓			
Carpet	✓***		8 yard <sup>3*</sup>	
Carpet tiles		✗	8 yard <sup>3*</sup>	20 yard <sup>3*</sup>
Clothes	✓			
Computers / monitors		✗		
Electrical (WEEE)		✗		
Flourescent tubes		✗		
Food	✓*			
Fridges / freezers		✗*	Addition charges	
Furniture	✓			
Garden	✓			
Gas bottles		✗*	Addition charges	
General construction waste	✓			20 yard <sup>3*</sup>
Glass	✓		8 yard <sup>3*</sup>	
Hazardous		✗		
Household	✓			
Japanese knot weed		✗		
Liquid		✗		
Mastic		✗		
Mattresses	✓*		Addition charges	
Metal	✓			
Oil (including cannisters and rags)		✗		
Paints and varnishes		✗		
Pallets	✓			
Paint tins		✗		
Plasterboard		✗***	Addition charges	
Roofing material, tiles and felt	✓*		Addition charges	
Rubber and tyres		✗*	Addition charges	
Shotblast			May be hazardous*	
Soil	✓		8 yard <sup>3*</sup>	20 yard <sup>3</sup>
Spoil	✓		8 yard <sup>3*</sup>	20 yard <sup>3</sup>
Tree roots and stumps		✗*		
TV's		✗*	Addition charges	

\* Check surcharge with supplier first

\*\* Check size with supplier first

\*\*\* (usually only a %)

## Skip Sizes Offered

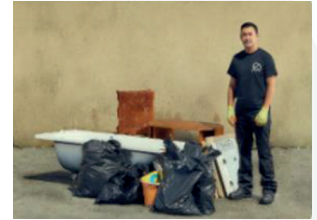
Cubic Capacity		Height		Length		Width		Approx Bin Bags
2 Yard <sup>3</sup>	1.5 m <sup>3</sup>	0.76m	2'6"	1.2m	4'	0.91m	3	20
3 Yard <sup>3</sup>	2.3 m <sup>3</sup>	1.07m	3'"	2.31m	5'5"	1.37m	3'6"	30
4 Yard <sup>3</sup>	3 m <sup>3</sup>	0.97m	3'2"	1.83m	6'	1.29m	4'3"	40
6 Yard <sup>3</sup>	4.6 m <sup>3</sup>	1.22m	4'"	2.6m	8'6"	1.52m	5'	60
8 Yard <sup>3</sup>	6 m <sup>3</sup>	1.22m	4"	3.66m	12'	1.68m	5'6"	80
10 Yard <sup>3</sup>	8.85 m <sup>3</sup>	1.5m	4'11"	3.74m	12'3"	1.78m	5'10"	100
12 Yard <sup>3</sup>	9.2 m <sup>3</sup>	1.68m	5'6"	3.7m	12'2"	1.78m	5'10"	120
14 Yard <sup>3</sup>	10.7 m <sup>3</sup>	1.8m	5'11"	4.1m	13'5"	1.75m	5'9"	140
16 Yard <sup>3</sup>	12.23 m <sup>3</sup>	2m	6'7"	4.3m	14'1"	1.75m	5'9"	160
20 Yard <sup>3</sup>	15.3 m <sup>3</sup>	1.62m	6'7"	6.07m	19'11"	2.23m	7'4"	200
40 Yard <sup>3</sup>	30.58 m <sup>3</sup>	2.69m	8'2"	6.07m	19'11"	2.23m'	7'4"	400

## Man-in-Van Load Size Guide

### 1 Yard (100kg)



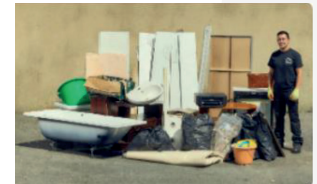
### 2 Yard (200kg)



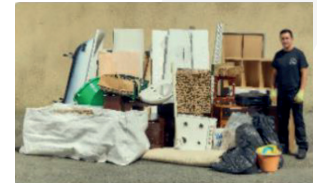
### 4 Yard (400kg)



### 7 Yard (500kg)



### 10 Yard (750kg)



### 14 Yard (1000kg)

